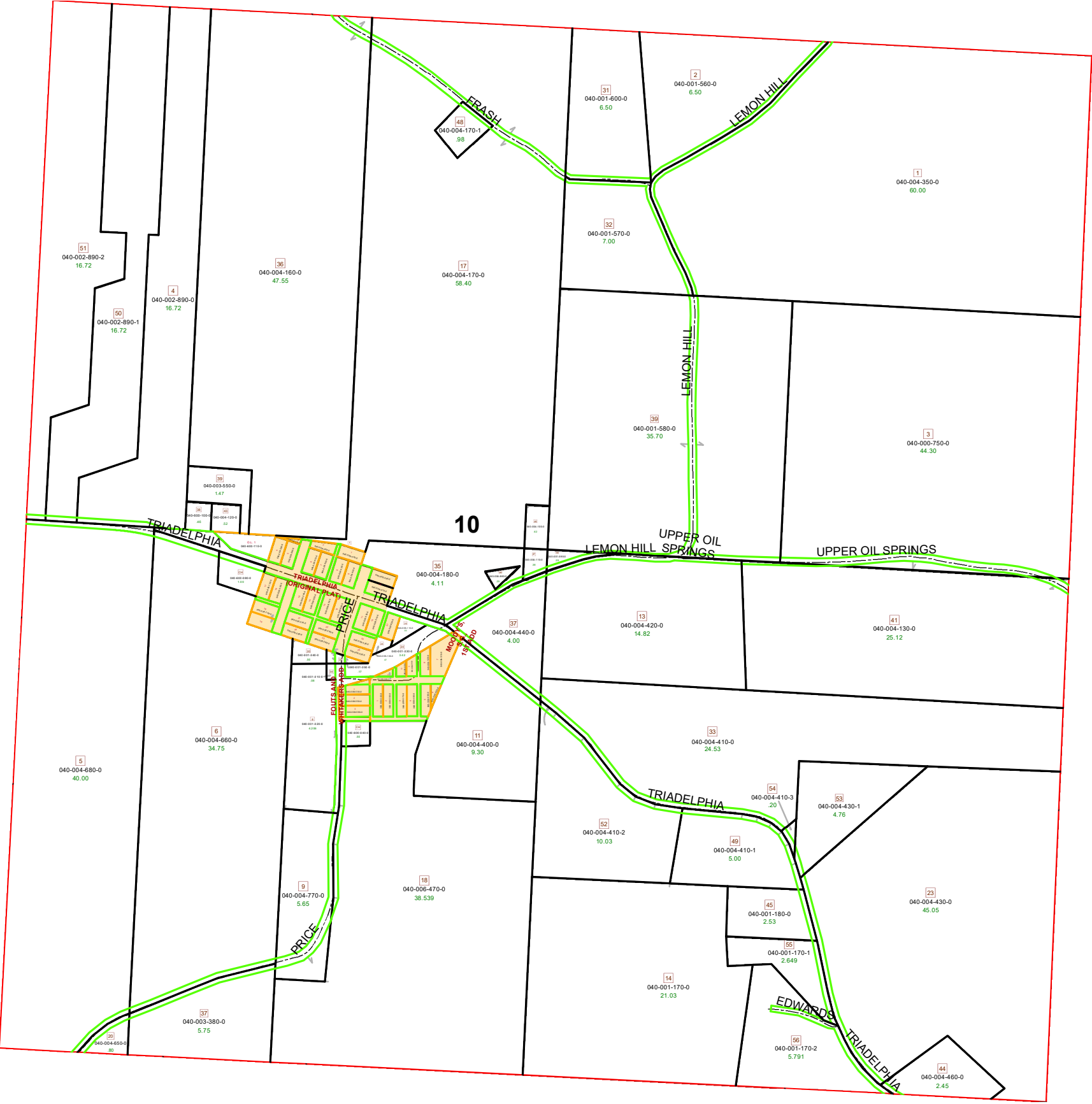


# DEERFIELD TOWNSHIP SECTION 10 R13- TWP 9 MORGAN COUNTY, OH



PIN	VOL	PAGE	Owner	LegalDescr	Acres
040-600-040-0	D.V 33	186	CHURCH (CHURCH OF CHRIST)	R13 T09 S10 0	0.5
040-600-080-0	D.V 6	424	CHURCH (TRIDELPHIA M E)	R13 T09 S10 0	1
040-001-590-0	D.V 71	772	CLEMENS DANIEL S & JENNIFER L T	R13 T09 S10 SD 19	0.29
040-001-580-0	OR71	772	CLEMENS DANIEL S & JENNIFER L T	R13 T09 S10 SD 39	35.7
040-004-400-0	OR87	10	CLEMENS JOHN MARK & JOYCE I T	R13 T09 S10 SD 11	9.3
040-600-110-0			DEERFIELD TWP TRUSTEES	LOT 1	0.25
040-600-100-0	D.V. 138	81	DEERFIELD TWP TRUSTEES	R13 T09 S10 LOT 3	0.46
040-001-170-2	OR226	552	EDWARDS JESSE R	R13 T09 S10 SD 26	5.791
040-001-170-1	OR226	549	EDWARDS SCOTT D	R13 T09 S10 SD 55	2.649
040-001-180-0	OR213	1626	EDWARDS SCOTT D & PAMELA K	R13 T09 S10 SD 45	2.53
040-001-170-0	OR213	1626	EDWARDS SCOTT D & PAMELA KA	R13 T09 S10 SD 14	21.03
040-000-750-0	OR81	259	GOFF GERI L C/O LUIS G CAMPOS	R13 T09 S10 SD 3 L	44.3
040-001-320-0	OR218	367	HILL REVA L	R13 T09 S10 SD 8	4.206
040-001-310-0	OR218	367	HILL REVA L	R13 T09 S10 SD 34	0.08
040-001-350-0	OR218	367	HILL REVA L	R13 T09 S10 SD 27	0.167
040-001-340-0	OR218	367	HILL REVA L	R13 T09 S10 SD 30	0.5
040-006-470-0	OR212	46	MAXWELL CLAUDE M & HEIDI L	R13 T09 S10 SD 18	39.88
040-003-550-0	OR44	249	PETTET ADDIE BELLE	R13 T09 S10 SD 39	1.47
040-004-110-0	OR192	646	PETTET ARVIN	R13 T09 S10 SD 47	0.38
040-004-100-0	D.V 192	646	PETTET ARVIN	R13 T09 S10 SD 46	0.62
040-004-120-0	D.V 156	783	PETTET B K	R13 T09 S10 SD 43	0.52
040-004-170-0	OR113	211	PETTET BURRELL K & BURRELL F & R13 T09 S10 SD 15	58.403	
040-004-160-0	OR113	211	PETTET BURRELL K & BURRELL F & R13 T09 S10 SD 36	47.55	
040-004-130-0	OR113	211	PETTET BURRELL KLEITA	R13 T09 S10 SD 41	25.12
040-004-180-0	OR12	230	PETTET FRANKLIN JR & DEBBIE G	R13 T09 S10 SD 35	4.11
040-002-890-2	OR121	677	PETTET GARY D	R13 T09 S10 SD 51	16.716
040-002-890-1	OR106	511	PETTET SCOTT W	R13 T09 S10 SD 50	16.716
040-002-890-0	OR203	508	PETTET VANCE T	R13 T09 S10 SD 4	16.717
040-001-570-0	OR21	88	PORTER DEAN R & JULIA L	R13 T09 S10 SD 32	7
040-001-560-0	OR21	88	PORTER DEAN R & JULIA L	R13 T09 S10 SD 2	6.5
040-001-600-0	OR21	88	PORTER DEAN R & JULIA L	R13 T09 S10 SD 31	6.5
040-004-460-0	OR146	185	PORTER ROY DEAN	R13 T09 S10 SD 44	2.45
040-004-410-2	OR206	3319	PORTER ROY DEAN & JULIA L	R13 T09 S10 SD 52	10.03
040-004-350-0	OR87	16	PORTER ROY DEAN & JULIA L	R13 T09 S10 SD 1	60
040-004-430-0	OR146	185	PORTER ROY DEAN & JULIA L	R13 T09 S10 SD 23	40.281

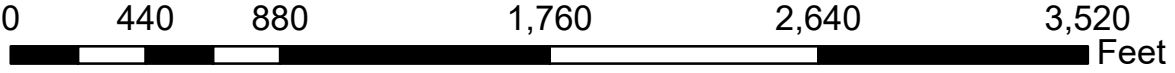
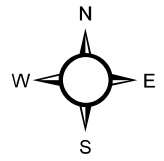
**Boundaries**

**Type**

- County
- Lot

- Future Split
- Hydro
- Section
- Township
- Symbols
- Subdivisions
- Parcels
- Roads

- Parcel
- ROW
- Section
- Township
- Symbols
- Subdivisions
- Parcels
- Roads

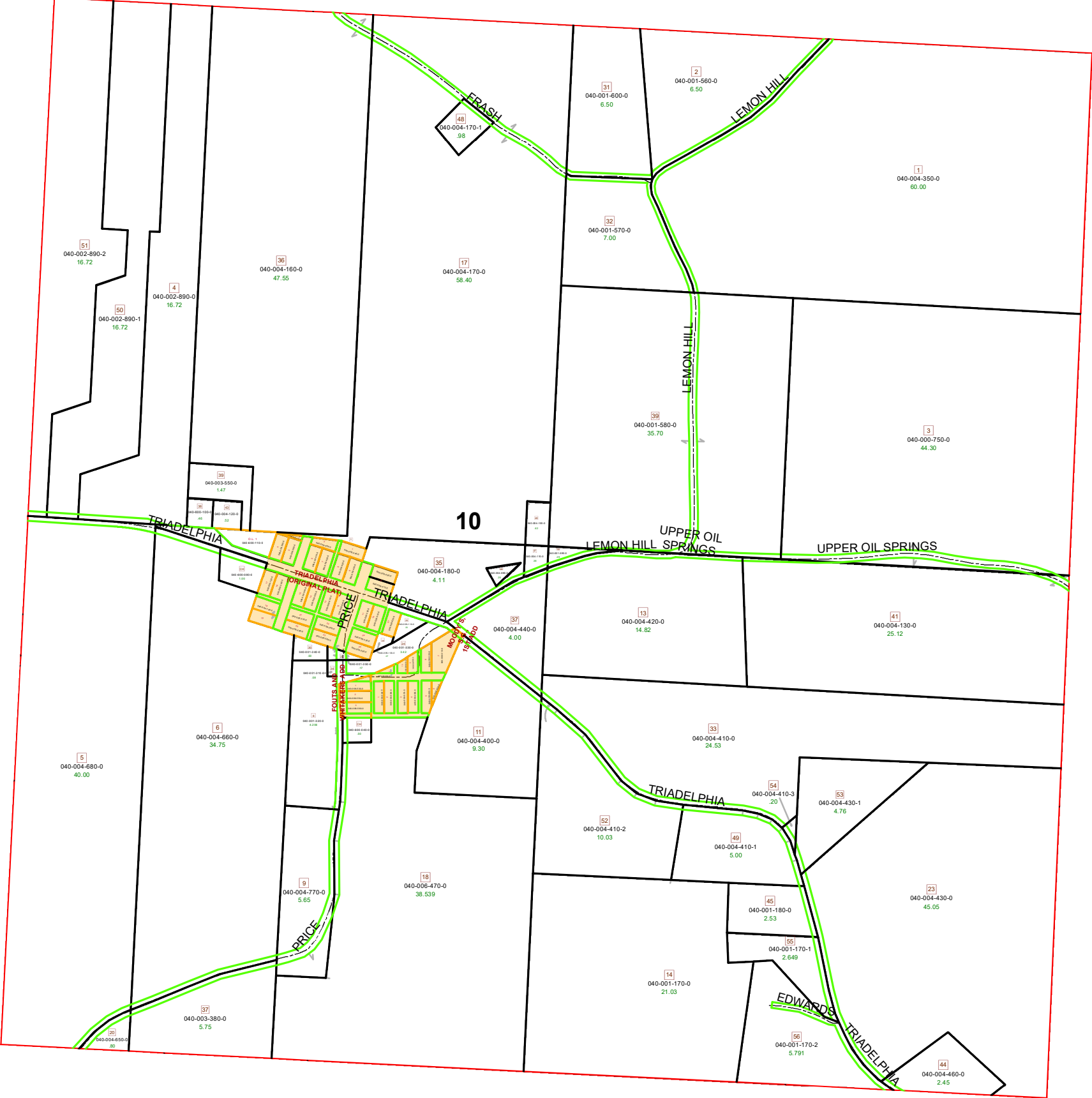


Source: Morgan County Engineer's Office  
 Author: Marcia Wolfe  
 Date: 5/21/2020

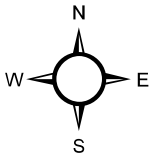


Disclaimer: The information that these maps contains is for reference purposes only. Please bring any errors to the attention of the Engineer's Office staff.  
 Thank you

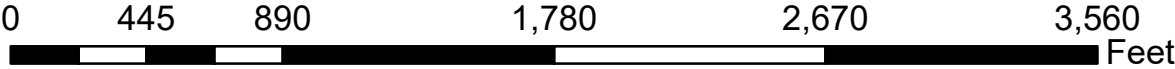
# DEERFIELD TOWNSHIP SECTION 10 R13- TWP 9 MORGAN COUNTY, OH



PIN	VOL	PAGE	Owner	LegalDescr	Acres
040-004-650-0	D.V 166	371	REED MILLER V & CRYSTAL J	R13 T09 S10 SD 20	0.8
040-004-660-0	D.V 169	136	REED MILLER V & CRYSTAL J	R13 T09 S10 SD 6	34.75
040-004-680-0	D.V 169	136	REED MILLER V & CRYSTAL J	R13 T09 S10 SD 5-	40
040-004-640-0	D.V 166	371	REED MILLER V & CRYSTAL J	R13 T09 S15 SD 24	2.35
040-004-690-0	D.V 169	136	REED MILLER V & CRYSTAL J	R13 T09 S15 SD 9	0.76
040-004-770-0	D. V 133	517	RICHARDSON CRAIG A & CLARA M	R13 T09 S10 SD 9-	5.65
040-004-440-0	OR87	13	RICHARDSON DEAN F & JOY E	R13 T09 S10 SD 37	4
040-004-420-0	OR87	13	RICHARDSON DEAN F & JOY E	R13 T09 S10 SD 13	14.82
040-004-430-1	OR218	1176	RILEY SUZANNA M	R13 T09 S10 SD 53	4.769
040-004-410-3	OR218	1176	RILEY SUZANNA M	R13 T09 S10 SD 54	0.201
040-004-860-0	D.V 172	681	SANFORD HELEN BUTTON ET2AL	R13 T09 S10 SD 26	0.25
040-004-170-1	OR222	2148	TALBERT BLAKE A	R13 T09 S10 S D 48	0.977
040-004-410-1	OR185	42	WATERS HEATHER D	R13 T09 S10 SD 49	5
040-004-410-0	OR87	7	WILSON JAMES B & LINDA R	R13 T09 S10 SD 33	24.539
040-003-380-0	D.V 190	125	WILSON TERRI JO	R13 T09 S10 SD 37	5.75



Boundaries	
--- Future Split	--- ROW
--- Hydro	--- Section
--- County	--- Township
--- Lot	--- Symbols
--- Parcel	--- Subdivisions
--- Roads	--- Parcels



Source: Morgan County Engineer's Office  
 Author: Marcia Wolfe  
 Date: 5/21/2020



Disclaimer: The information that these maps contains is for reference purposes only. Please bring any erros to the attention of the Engineer's Office staff.  
 Thank you